



661 FM 2550  
HUNTSVILLE, TEXAS

2,967 SQ FT | 4 BEDROOMS | 3 BATHROOMS | 1.5 ACRES





# 661 FM 2550



Immerse yourself in the country charm of this brick home that sits on 1.5 acres. The living spaces were thoughtfully laid out, and the open concept kitchen/dining room offers space for gatherings with a breakfast bar and island. The main areas offer wood laminate and tile flooring and all bedrooms are generously sized. Upstairs, there is a 4th bedroom and bathroom, plus a large game room with built-ins. Outside offers a playhouse for young imaginations to roam, a greenhouse, and a chicken coop to raise your own feathered friends and experience the joys of farm life. Don't miss this one-of-a-kind country home!



Markham Realty  
Selling Quality Texas Properties Since 1970  
contact@markhamrealty.com  
936-295-5989 | markhamrealty.com



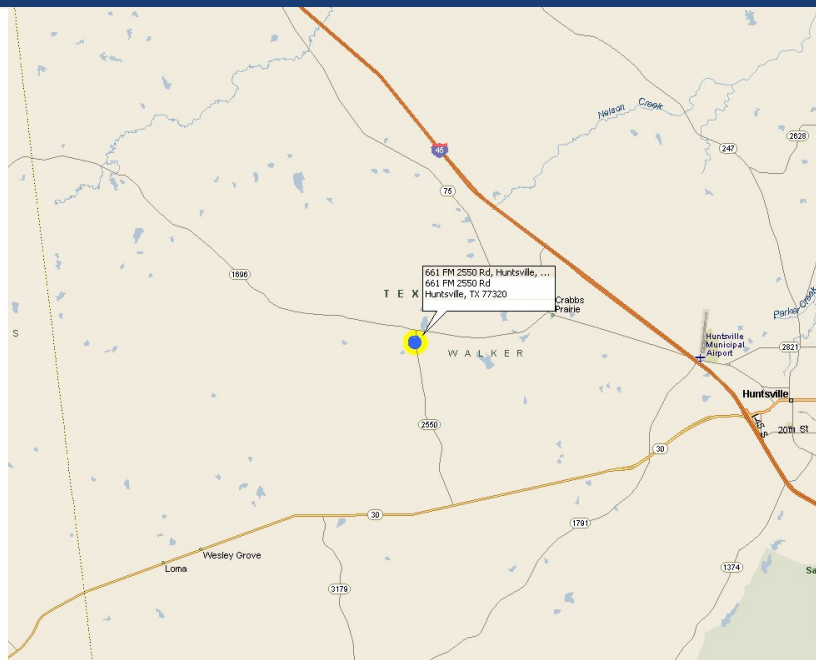
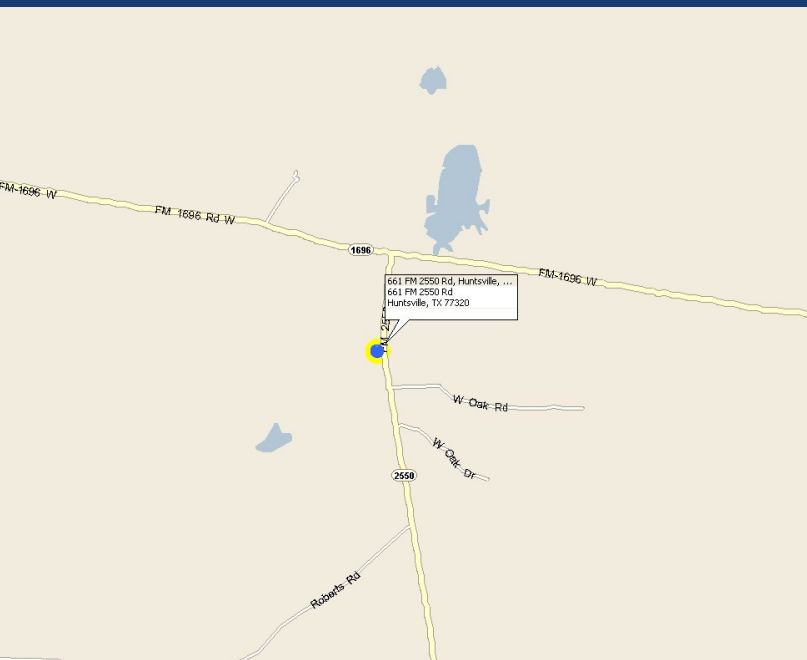
Scan here for additional  
information & photos.



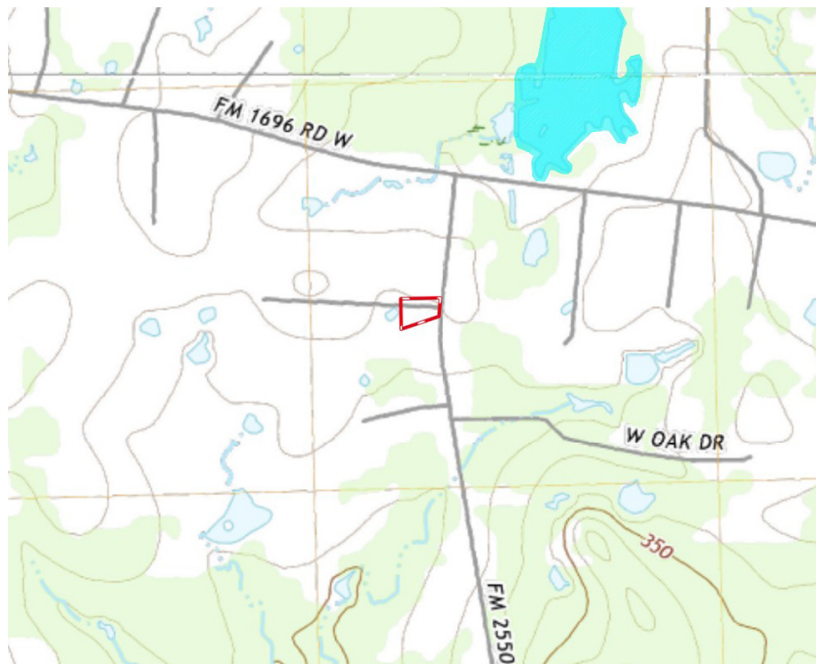
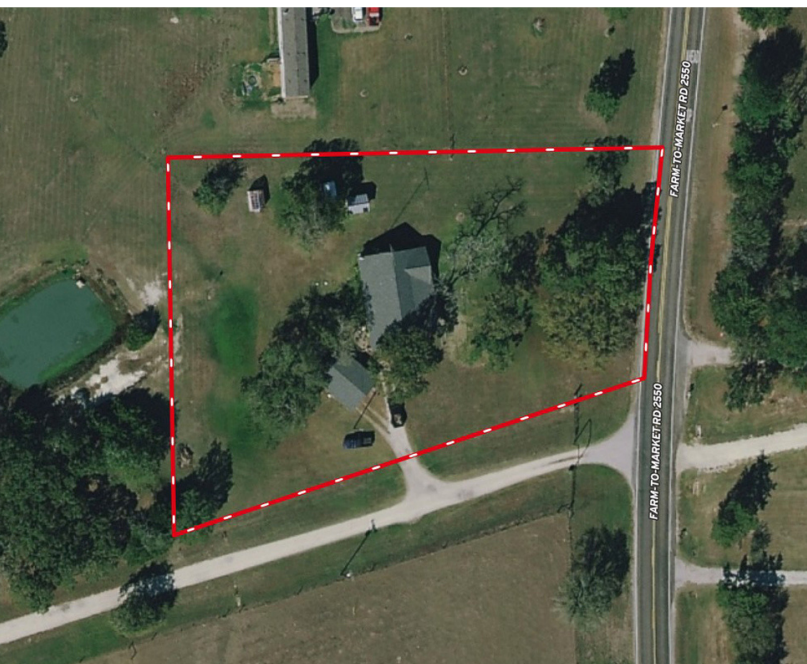
Information furnished is from sources deemed reliable, but is not guaranteed by Markham Realty, Inc. The offerings are subject to change in price, errors, omissions, prior sales, or withdrawal without notice. Square footage, acreage size and lot dimensions are approximate. All persons and firms named in this brochure are licensed brokers or salespersons. Markham Realty, Inc. will co-broker with any licensed Broker if Broker and/or agent accompanies his or her prospective buyer from the first (1st) showing forward.



# 661 FM 2550



Directions: From Huntsville at the intersection of I-45 and Highway 30 (11th Street), follow Highway 30 West approximately 7 miles to FM 2550, turn right. Follow FM 2550 for approximately 4.1 miles to property on the left.



Markham Realty  
Selling Quality Texas Properties Since 1970  
contact@markhamrealty.com  
936-295-5989 | markhamrealty.com



Scan here for additional  
information & photos.



Information furnished is from sources deemed reliable, but is not guaranteed by Markham Realty, Inc. The offerings are subject to change in price, errors, omissions, prior sales, or withdrawal without notice. Square footage, acreage size and lot dimensions are approximate. All persons and firms named in this brochure are licensed brokers or salespersons. Markham Realty, Inc. will co-broker with any licensed Broker if Broker and/or agent accompanies his or her prospective buyer from the first (1st) showing forward.